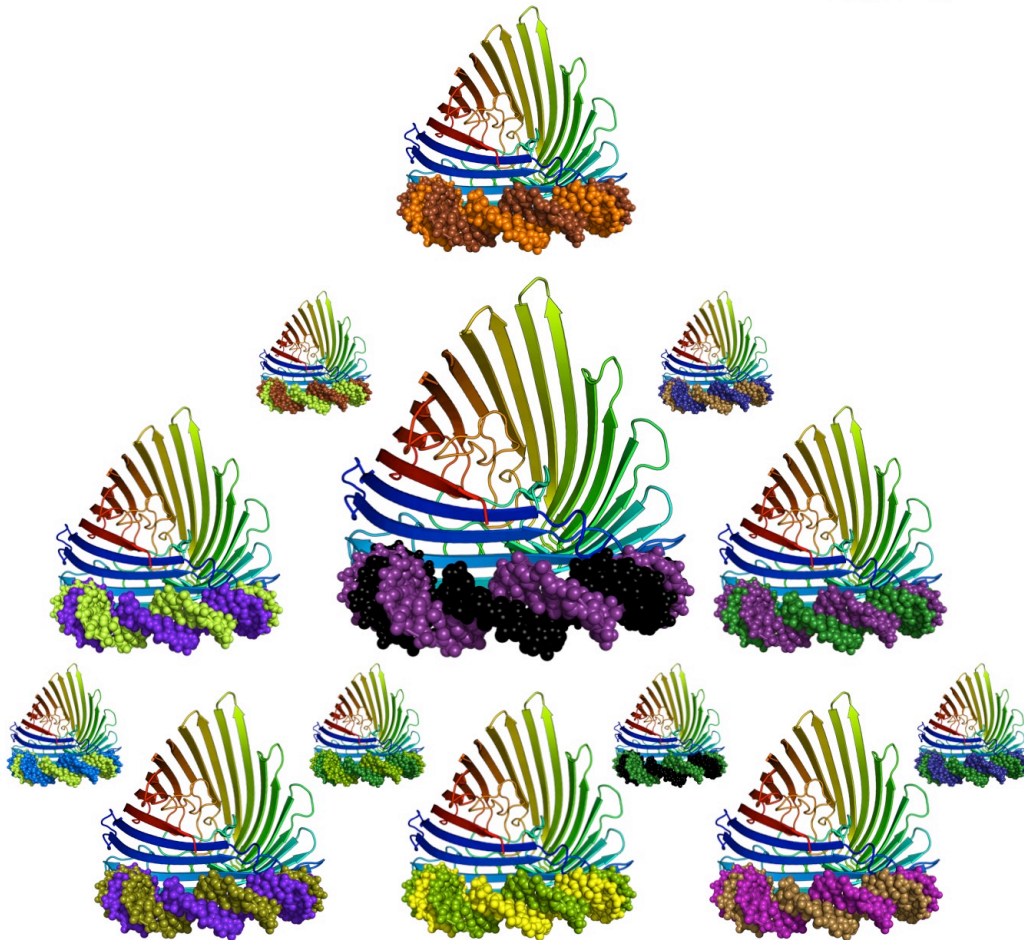


Δ Gibbs₃₇

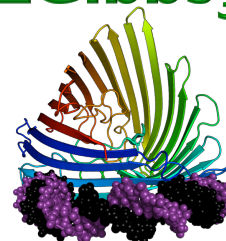


Prime Time Thermo

Organizers - Tonya Zeczycki & Krishna Mallela
37th Annual Gibbs Conference on Biothermodynamics
Touch of Nature Outdoor Education Center • Carbondale, IL, USA
October 14-17, 2023

Sponsors - Applied Photophysics, Biophysical Society, Daedalus Innovations, Genentech, Horiba Scientific, ISS, JASCO, LUMICKS, Malvern Panalytical, New England Biolabs, Nicoya, National Science Foundation, OLIS, Protein Society, Refeyn, Texas State University, University of Iowa

Δ Gibbs₃₇



**Prime Time Thermo
2023**

Support

Commercial, Academic & Federal Sponsors

- ***Applied Photophysics***
- ***Biophysical Society***
- ***Daedalus Innovations***
- ***Genentech***
- ***Horiba Scientific***
- ***ISS***
- ***JASCO***
- ***LUMICKS***
- ***Malvern Panalytical***
- ***NEB - New England Biolabs***
- ***Nicoya Lifesciences***
- ***National Science Foundation***
- ***OLIS***
- ***Protein Society***
- ***Refeyn***
- ***Texas State University***
- ***University of Iowa***

Individual Donors

- ***Serge N. Timasheff Scholarships***
James C. Lee
Jack Correia
- ***Selected Commemorative Items for Conference***
Madeline Shea

Disclaimer: The Gibbs Society of Biological Thermodynamics gratefully acknowledges financial support for the conference from multiple private and public entities. Sharing information about sponsors does not represent endorsement of the views or products of those sponsors by the Society.

*The Gibbs Society
thanks the*

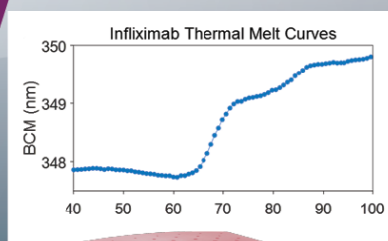
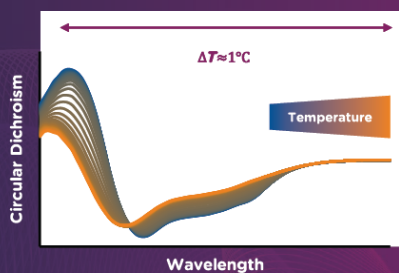
National Science Foundation

*for generous support of
Trainee participation in
the 37th Annual
Gibbs Conference on
Biothermodynamics*



AppliedPhotophysics

Here to support all your biological
thermodynamic applications



THE FUTURE OF SCIENCE IS HERE

Genentech's mission is the mission of all science—going beyond test tubes, patents, and profits, and committing every moment of every day to a broader charge of social responsibility.

We support the future of science and medicine, the scientists who dedicate their lives to it, and the patients who depend on it.

THE FUTURE OF SCIENCE IS HERE.

Genentech
A Member of the Roche Group



alto

digital surface plasmon resonance

kinetics • affinity • quantitation • screening • epitope binning

-  15 minute setup
-  200X less sample
-  16 channels
-  99% uptime

Make **discoveries**, not compromises

www.nicoyalife.com



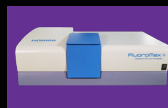
SUPERIOR TECHNOLOGY UV/VIS & NIR SPECTROPHOTOMETERS
DESIGNED-IN UPGRADABILITY ON EVERY PRODUCT
EXCELLENT SUPPORT FOR CLIENTS WORLDWIDE
WOMAN-OWNED



www.olisclarity.com
Athens, Georgia, USA

Sponsors

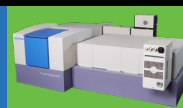
HORIBA
Scientific



FluoroMax Plus



Duetta



Fluorolog-QM



DeltaFlex



Aqualog



FLIMera

The Most Complete Line of Fluorescence Instruments

Steady State
Lifetime
Phosphorescence
Anisotropy
FRET/LRET
Quantum Yield
Photoluminescence
EEMs
Kinetics
FLIM



fluorescence.com

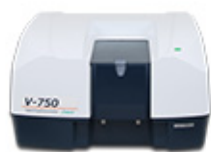
Explore the future

Automotive | Process & Environmental | Medical | Semiconductor | Scientific

HORIBA

THERMAL MELTING

JASCO



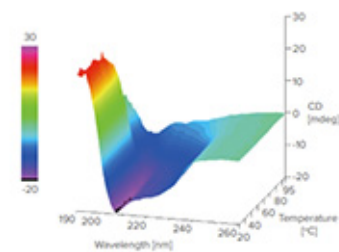
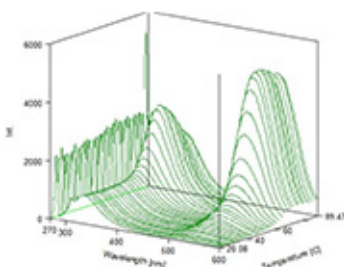
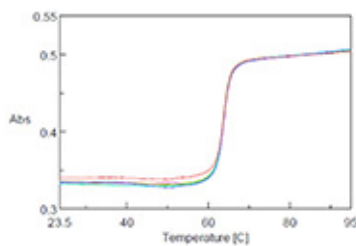
UV-Visible



Fluorescence



Circular Dichroism



JOIN US FOR S'MORE MELTING
LAKESIDE AT THE BONFIRE AFTER POSTER SESSION!

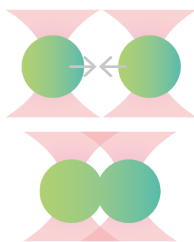
www.jascoinc.com | © 2023 JASCO

Take your science to the next level

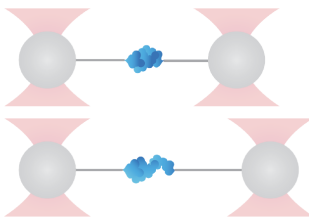
LUMICKS

LUMICKS C-Trap

Directly manipulate and interact with biomolecular condensates



Measure and control protein folding dynamics in real time



To find out more, come to the LUMICKS poster and talk to our experts!



Missed us at the conference? Contact us via our website



THE GOLD STANDARD FOR THERMODYNAMICS



MicroCal PEAQ ITC

- Binding affinity & thermodynamics
- No labels, immobilization or consumables
- Intuitive, user-friendly data analysis software



MicroCal PEAQ DSC

- High precision melting points & thermal profiles
- Full automation with well plate format
- Integrated, simple to use data analysis software



Protein Stable SUPR-DSF

- Next-generation intrinsic differential scanning fluorescence
- High-throughput protein stability
- No labels or dyes with standard 384 well-plate sample presentation.



www.malvernpanalytical.com



be INSPIRED
drive DISCOVERY
stay GENUINE

Putting science first.

Post-Doctoral Fellowships at New England Biolabs®

Established in the mid 1970s, New England Biolabs, Inc. (NEB®) is the industry leader in the discovery and production of enzymes for molecular biology applications and now offers the largest selection of recombinant and native enzymes for genomic research. NEB continues to expand its research and development into areas related to DNA replication, programmable nucleases, epigenetics, molecular parasitology, sample preparation for next generation sequencing, synthetic biology, glycobiology and RNA analysis.

Scientists in the Research Department at New England Biolabs conduct basic research in the areas of Molecular Enzymology, Nucleic Acid Replication, Protein Expression and Modification, Genome Biology and RNA Biology. The Post-Doctoral Fellowship program at NEB aims to train recent Ph.D. graduates in a modern industrial molecular biology setting. Post-doctoral fellows conduct basic research, publish in high quality journals and present at scientific conferences.

Employment at NEB offers a stimulating and creative work environment in a state-of-the-art research and production facility, with a team of exceptional scientists and professional staff. The NEB culture emphasizes personal and professional growth through creativity, teamwork, respect and responsibility, while maintaining a casual campus-like working environment. Our diverse and talented team of scientists enjoy a collaborative research environment with much of the freedom and intellectual challenge of academia. Our unique corporate philosophy encourages dialogue and innovation.

For information about Post-Doctoral Fellowships at New England Biolabs please visit: <https://www.neb.com/about-neb/careers>

***The Gibbs Society of
Biological Thermodynamics thanks***



**THE
PROTEIN
SOCIETY**

***for generous support of the
37th Annual Gibbs Conference on
Biothermodynamics.***

Characterize **biomolecular
interactions** with

mass photometry

A single-molecule method for
rapid measurement of molecular mass

- In solution
- Complex binding processes
- Small sample amounts



Refeyn mass photometers

Find out more
www.refeyn.com





THE GRADUATE COLLEGE
gradcollege.txstate.edu

**COLLEGE OF SCIENCE
AND ENGINEERING**
cose.txstate.edu

**MATERIALS SCIENCE, ENGINEERING,
AND COMMERCIALIZATION PROGRAM**
msec.txstate.edu



*Department of Biochemistry
and Molecular Biology*

The Department of Biochemistry and Molecular Biology at the University of Iowa Roy J. and Lucille A. Carver College of Medicine has a foundation of strong traditions in biophysical analysis, enzymology, structural biology, cytoskeletal and nuclear structure and function, and the use of model organisms to dissect cell biology and development.

Departmental faculty work on an array of problems:

- genome maintenance
- gene expression
- protein localization
- large-scale simulations
- structural biology
- signal transduction
- metabolism

Researchers are served by state-of-the-art core research facilities and research support facilities. Much of the research conducted is interdisciplinary and collaborations are fostered and coordinated through major research centers, institutes and programs. The College has a longstanding commitment to education, research, and clinical care. The Carver College of Medicine is part of University of Iowa Health Care, a fully integrated academic medical center, and the state's only comprehensive academic medical center.

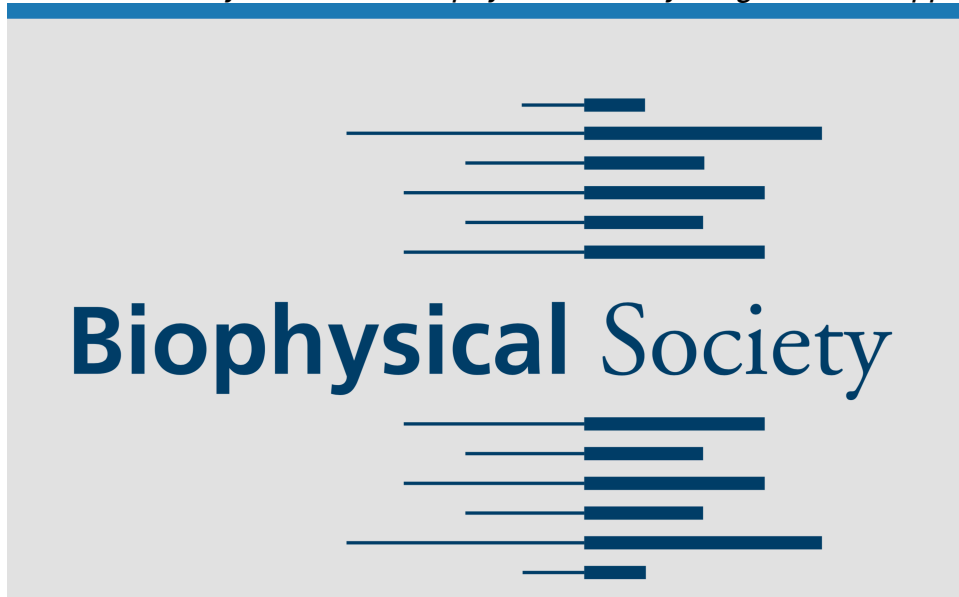


Named one of the best college towns in America, the University of Iowa is located in Iowa City, where residents enjoy the energy and vitality for the arts, athletics, and sciences in an incredibly diverse and educated community.



Sponsors

The Gibbs Society thanks the Biophysical Society for generous support.



Serge N. Timasheff Scholarships

Support for First-Time Student Attendees & Saturday Night Thermo Career Panels

Scientific progress is built on the foundations laid by the pioneering scholars of diverse scientific disciplines. The Gibbs Conference on Biothermodynamics was established for the purpose of assembling scientists from different disciplines in order to synergize their diverse experiences applying thermodynamic principles. These principles were built on the basic laws of the quantitative sciences, and their applications have played enormous roles in elucidating the phenomena that govern biology. In 2019, our friend and mentor Serge Nicholas Timasheff – one of the founders of biological thermodynamics and a humble visionary with high integrity – died after seventy years successfully advancing the disciplines of protein-solvent interactions, linked equilibria, and macromolecular assembly.

Serge began studying protein-solvent interactions upon the completion of his postdoctoral fellowship with J. G. Kirkwood. He dedicated a significant part of his career to elucidating the mechanisms of this young discipline. He had the foresight to recognize that biological reactions are not well-represented by the interactions of a protein and its ligand in vacuum. Biological reactions occur in solvent and in extreme conditions, e.g., high/freezing temperatures, across a wide range of pH, and/or in fluctuating salinity. Thus, the physical principles enabling correct protein function must be understood in the context of water, salt, or other components. He led his lab to successfully elucidate these mechanisms via insightful applications of basic thermodynamic principles and carefully chosen experimental approaches. The contributions of his lab are critical to current biotechnology companies, who must formulate precise solvents to preserve the activities of their important drugs.

Over the last few decades, the Timasheff lab focused on elucidating the quantitative biophysical parameters of brain tubulin-microtubule assembly and disassembly. These processes comprise many linked-equilibria, including ligand-dependent conformational changes and multiple assembly and disassembly pathways and are modulated by vinblastine, colchicine, Mg^{2+} , GDP, GTP and temperature. Their published studies on vinblastine- and colchicine-tubulin interactions provide state-of-the-art examples for the power of applying linked-function theory. The judicious choice of experimental approaches of sedimentation and turbidity provide excellent examples for those who are interested in tackling complex biological problems.

Serge was not only a thoughtful and visionary scientist, he was a gentleman scholar of integrity. He had the reputation of publishing rigorous manuscripts that withstand the test of time. He was very supportive of his colleagues and patiently insisted on acquiring high quality data, no matter how much time it took.

These values are shared by the many excellent scientists who regularly attend the Gibbs Conference. The Serge N. Timasheff Scholarship is offered for the first time in 2022 to encourage student scientists of the next generation to attend this annual meeting where they can learn from each other in a friendly and helpful community.

*The Gibbs Society gratefully acknowledges founding organizer **James C. Lee** for his contributions to a fund in memory of Serge N. Timasheff to provide scholarships to first-time student attendees and support the career panel that is held in conjunction with Saturday Night Thermo. The Society thanks **Jack Correia** for his financial contribution to these goals.*